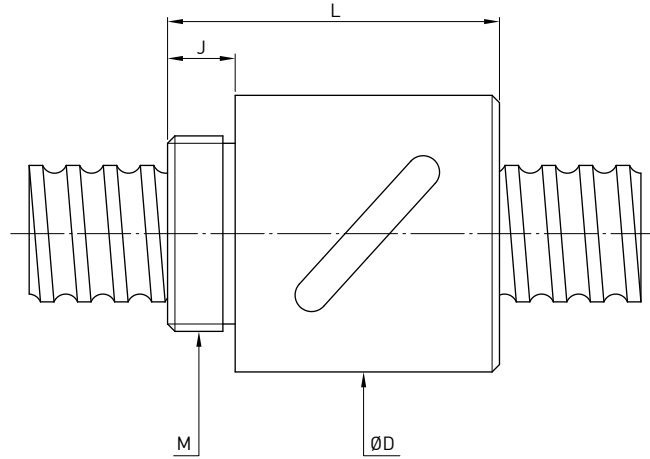


**R S B TYPE**



Model	Size		Ball Dia.	Circuits	Dynamic Load 1x10 <sup>6</sup> revs C [ kgf ]	Static Load Co [ kgf ]	Nut		Mounting Thread M	Mounting Thread Length J
	Nominal Dia.	Lead					L	D		
8-2.5B1	8	2.5	2.000	2.5x1	218	317	24	22	M18x1P	7.5
10-2.5B1	10			2.5x1	252	405	24	24	M20x1P	7.5
10-4B1	10	4	2.381	2.5x1	304	466	34	26	M22x1P	10
12-4B1	12			2.5x1	344	574	34	28	M25x1.5P	10
16-5B1	16	5	3.175	2.5x1	679	1226	42	36	M30x1.5P	12
20-5C1	20			3.5x1	1001	2149	54	40	M36x1.5P	14
25-5B2	25	5	3.175	2.5x2	1534	3975	69	46	M42x1.5P	19
32-5B2	32			2.5x2	1702	5098	69	54	M50x2P	19
32-10B2	32	10	6.350	2.5x2	4379	10345	105	68	M62x2P	19
40-10B2	40			2.5x2	4812	12732	110	76	M70x2P	24
50-10C2	50	10	6.350	3.5x2	7146	22477	135	88	M82x2P	29
63-10C2	63			3.5x2	7869	28290	135	104	M95x2P	29